



## Imaging Findings of Familial Dementia with a Tau R406W Mutation

Junji KOMATSU<sup>1</sup>, Kenjiro ONO<sup>1</sup>, Daisuke YANASE<sup>1</sup>, Miharu SAMURAKI<sup>1</sup>, Keisuke SHIMA<sup>1</sup>, Ryozo KUWANO<sup>2</sup>,  
Ichiro MATSUNARI<sup>3</sup> and Masahito YAMADA<sup>1</sup>

<sup>1</sup>Department of Neurology and Neurobiology of Aging, Kanazawa University Graduate School of Medical Science;

<sup>2</sup>Department of Molecular Genetics, Center for Bioresources, Brain Research Institute, Niigata University;

<sup>3</sup>The Medical and Pharmacological Research Center Foundation, Hakui, Japan

A 67-year-old man presented with memory impairment progressing during 1 year. His two brothers and one sister had dementia. Except for memory impairment, he had no abnormal neurological findings. Brain MRI showed mild frontotemporal atrophy involving hippocampus (Fig. 1). Fluorine-18 fluorodeoxyglucose positron emission tomography (FDG PET) revealed marked hypometabolism in the temporal poles as well as mild hypometabolism in the right striatum and posterior cingulate gyri even after correction for atrophy (1) (Fig. 2). Carbon-11 Pittsburgh Compound B PET showed no retention in the cortex. A R406W mutation was identified in exon 13 of the tau gene. Hypometabolism in the posterior cingulate gyri is frequently observed in AD, but it was also recently described in frontotemporal dementia (FTD) patients (2). The clinical phenotype of FTD with this mutation is similar to that of Alzheimer's disease (AD) (3). FDG PET could help in the differential diagnosis.

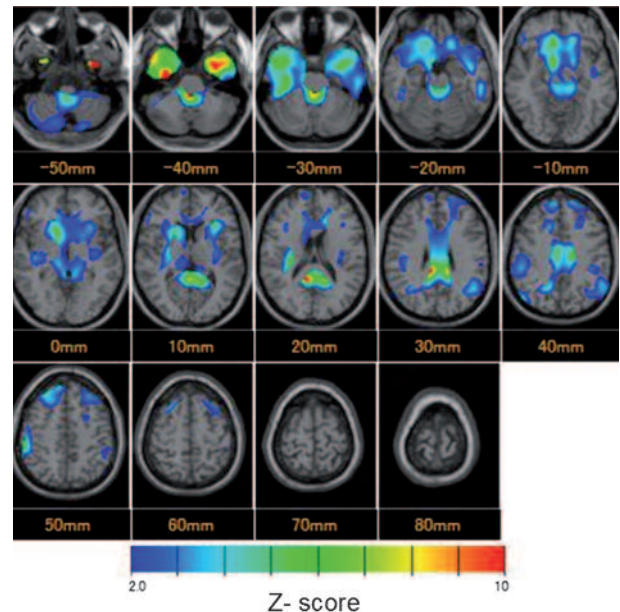


FIG. 2. — FDG PET  $z$ -score maps, displayed by overlaying on the anatomically standardized MRI image of healthy volunteers, showed remarkable reduction of the cerebral glucose metabolism in the bilateral temporal poles and mild reduction in the right striatum and posterior cingulate gyri.

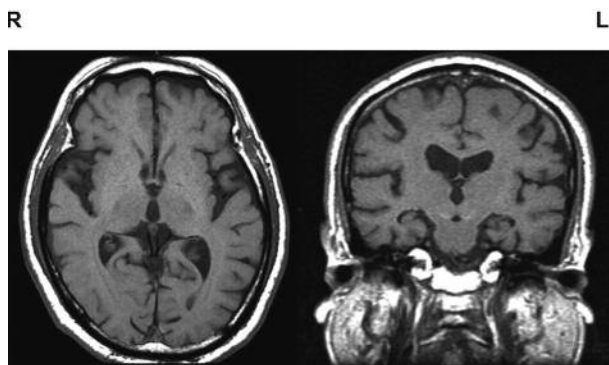


FIG. 1. — Brain MRI showed mild atrophy with mild frontotemporal atrophy. The MRI findings were not inconsistent with Alzheimer's disease.

### REFERENCES

1. Yanase D, Matsunari I, Yajima K, Chen W, Fujikawa A. *et al.* Brain FDG PET study of normal aging in Japanese: effect of atrophy correction. *Eur J Nucl Med Mol Imaging.* 2005;32:794-805.
2. Bastin C, Feyers D, Souchay C, Guillaume B, Pepin JL. *et al.* Frontal and posterior cingulate metabolic impairment in the behavioral variant of frontotemporal dementia with impaired autozoetic

- consciousness. *Hum Brain Mapp.* 2011;Apr 21 [Epub ahead of print].
3. Lindquist SG, Holm IE, Schwartz M, Law I, Stokholm J. *et al.* Alzheimer disease-like clinical phenotype in a family with FTDP-17 caused by a MAPT R406W mutation. *Eur J Neurol.* 2008;15:377-385.

Pr. Masahito Yamada, M.D., Ph.D.,  
Department of Neurology and  
Neurobiology of Aging,  
Kanazawa University Graduate School of  
Medical Science,  
13-1, Takara-machi,  
Kanazawa 920-8640 (Japan).  
E-mail: m-yamada@med.kanazawa-u.ac.jp